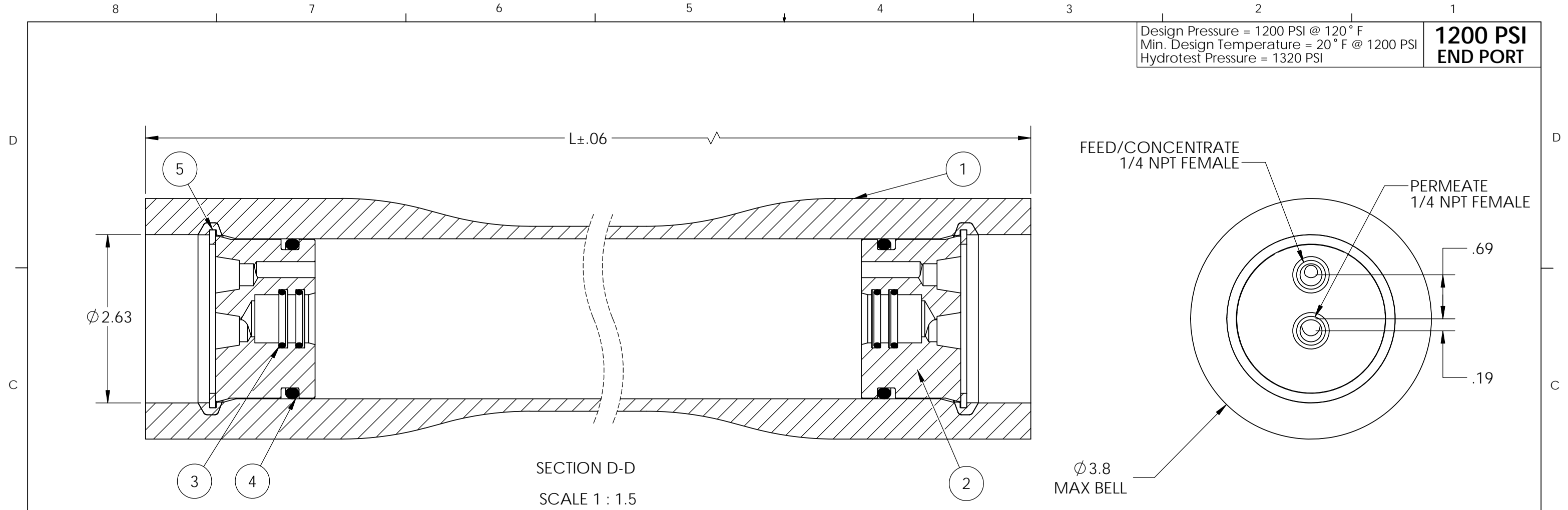


Design Pressure = 1200 PSI @ 120° F
 Min. Design Temperature = 20° F @ 1200 PSI
 Hydrotest Pressure = 1320 PSI

**1200 PSI
 END PORT**



SECTION D-D
 SCALE 1 : 1.5

| ITEM | QTY | PART NUMBER | DESCRIPTION | MATERIAL |
|------|-----|-------------|----------------------|---------------------------|
| 1 | 1 | 4020001 | Shell | Filament Wound, Epoxy FRP |
| 2 | 2 | 4020004 | End Plug | Acetal |
| 3 | 4 | 6180116-N | PWT Seal | Ethylene Propylene |
| 4 | 2 | 6180330-N | Head Seal | Ethylene Propylene |
| 5 | 2 | 6144256 | Retaining Ring, Head | Stainless Steel, 316 |

NOTES:
 DIMENSIONS IN INCHES (MM APPROX.)
 FOR REFERENCE ONLY, NOT FOR CONSTRUCTION UNLESS CERTIFIED
 INCORRECT MANIFOLDING WILL CAUSE SEVERE LOCAL STRESS AROUND PORT AND MAY RESULT IN LEAKS AND PREMATURE FAILURE. TAKE EVERY PRECAUTION LISTED IN THE ENGINEERING PACKET OR USERS MANUAL
 INTERNAL PERMEATE PRESSURE MUST NOT EXCEED 125 PSI
 SPECIFICATIONS SUBJECT TO CHANGE WITHOUT NOTICE

| Shell Length Code | L inch | Empty Weight lb |
|-------------------|--------|-----------------|
| -14" | 18 | TBD |
| -21" | 25 | TBD |
| -1 | 44 | TBD |
| -2 | 84 | TBD |

| | | | | |
|----------------------------|----------------------------|----------------|--------------------|----------|
| APPROVED D.G. 8/5/15 | PRO 2.5-1200-EP | | | |
| CHECKED R.R. 8/5/15 | | | | |
| DRAWN D.G. 8/5/15 | ECO N/A | REVISED N/A | DRAWING 1020001 | REV A |