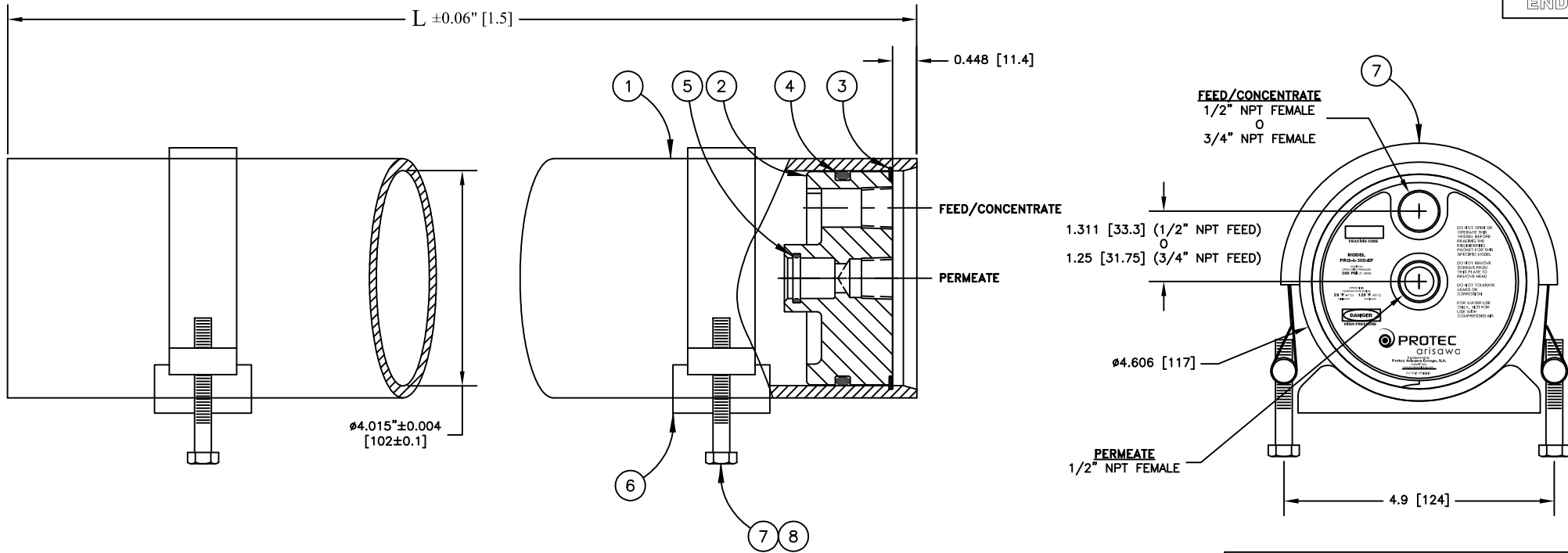


**300 PSI
END PORT**



DIMENSIONS IN Inch (mm).
 FOR REFERENCE ONLY, NOT TO BE USED FOR CONSTRUCTION UNLESS CERTIFIED
 CENTER VESSEL ON 2 SUPPORTS AT SPAN "S".
 INCORRECT MANIFOLDING WILL CAUSE SEVERE LOCAL STRESS AROUND PORT AND MAY RESULT IN LEAKS AND PREMATURE FAILURE. TAKE EVERY PRECAUTION LISTED IN THIS PACKET.
 SPECIFICATIONS SUBJECT TO CHANGE WITHOUT NOTICE

Shell Length Code	L	S	Empty Weight lb (kg)
	inch (mm)	Span inch (mm)	
-1x21"	24.37 (619)	1 @ 15 (1 @ 381)	6.6 (3)
-1x40"	43.39 (1102)	1 @ 28 (1 @ 711)	11 (5)
-2x40"	83.39 (2118)	1 @ 56 (1 @ 1422)	17.6 (8)
-3x40"	123.39 (3134)	1 @ 80 (1 @ 2032)	26.5 (12)
-4x40"	163.39 (4150)	2 @ 64 (2 @ 1626)	35.3 (16)
-5x40"	203.39 (5166)	2 @ 78 (2 @ 1981)	44 (20)
-6x40"	243.39 (6182)	2 @ 92 (2 @ 2337)	53 (24)

ITEM	QTY	P/N	DESCRIPTION	MATERIAL
1	1	4040084	Shell	Filament Wound, Epoxy FRP
2	2	4040087	End Plug, 1/2" NPT Feed	PVC
		4040088	End Plug, 3/4" NPT Feed	PVC
3	2	4040071	Retaining Ring	Stainless Steel, 316 Series
4	2	6180342-N	Plug Seal	Ethylene Propylene
5	2	6180116-N	PWT Seal	Ethylene Propylene
OPTIONAL VESSEL SUPPORT (NOT INCLUDED IN THE PRICE)				
6	2	4040037	Support Saddle	Thermoplastic Rubber
7	2	4040040	Strap Assembly	Stainless Steel, 316L
8	4	6150073	Strap Screw M8x50	Stainless Steel, A4
		6150001	Strap Screw 0.312-18 UNC x 2.5	Stainless Steel, A4

ENGR LS 8/05/12	<h1>PRO-4-300-EP</h1>			
QTY	REV	K		