



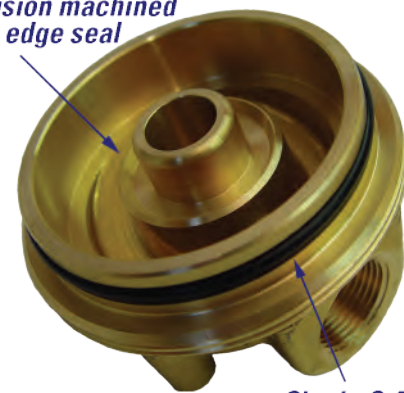
RHS, RHB Series *Single Cartridge Housings for Liquids*

Our proven single shell design has been a standard in the industry for over 30 years. Available in either 316L Stainless Steel or Brass Head with a 304L body, the RH series is perfect for almost any application. The maximum design working pressure is 300psi @ 200°F. The RH series is available in a wide range of connection sizes to fit your application as well as a wide variety of gasket options that make this housing compatible with almost any fluid. The standard gasket material is Buna-N. Please refer to our ordering guide for a complete list of options or contact one of our technical specialists for help.

Features

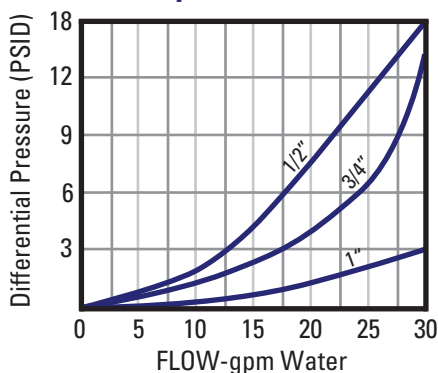
- Designed for industrial and commercial filtration needs
- Heavy duty construction for durability
- Offered in several materials
- Simple ring closure for quick cartridge change outs
- In line fittings for easy installation
- Knife edge seal at both cartridge ends to eliminate by-pass
- Housings accept double-open-end cartridges
- Complete selection of pipe fittings: flanged, sanitary and BSP
- Standard with mounting bracket kit

Precision machined knife edge seal



Single O-Ring seal

Housing Pressure Drop vs. Liquid Flow Rate

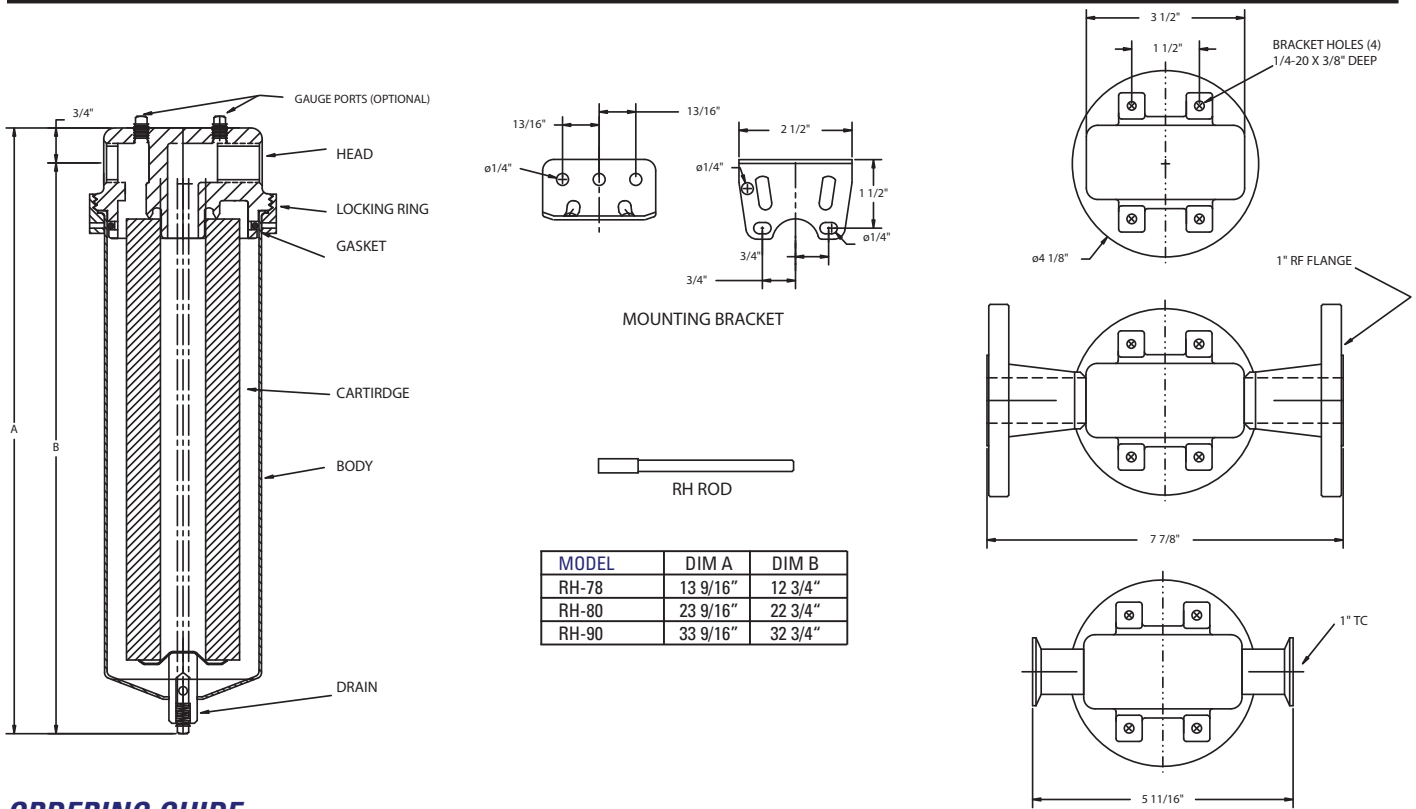


Standard Design Specifications

| Model | Qty. (Length) of Cartridges | Flow Rate GPM* | Drain | Max Ctg Diameter | Approx. Ship Weight | Box Size |
|-------|-----------------------------|----------------|----------|------------------|---------------------|----------|
| RH-78 | 1 (9 3/4") | 7 | 1/8" NPT | 2 3/4" OD | 6 lbs | 4x5x16 |
| RH-80 | 1 (20") | 14 | 1/8" NPT | 2 3/4" OD | 8 lbs | 4x5x25 |
| RH-90 | 1 (30") | 21 | 1/8" NPT | 2 3/4" OD | 11 lbs | 4x5x34 |

*Based on 7gpm per 10" length with a 25 micron wound cartridge at 2PSID clean and a viscosity of 1 cps. Flow rates are guide lines only. Actual flow rates are based on fluid, viscosity, cartridge type, micron ratings and other factors.

Dimensions



ORDERING GUIDE

| RH | S | - | 78 | 8 | - | 1F | - | E |
|-------|---|---|-------------------------------------|--------------------------------|---|---|---|--|
| Model | Material | | Cartridge Length | Pipe Size FNPT | | Options | | Gasket |
| RH | S 316L Stainless Steel with stainless steel drain plug | | 78 = 9 3/4" 80 = 20" 90 = 30" | 4 = 1/2" 6 = 3/4" 8 = 1" | | Blank = None BSP = BSP thread 1F = 1" Flange 1TC = 1" Ferrules *Vent = Vent Screw *GP4 = 1/4" gauge port *GP8 = 1/8" gauge port DSG = Variable Seal (spring loaded) 10 = 10" Cartridge Length 195 = 19 1/2" Cartridge Length 294 = 29 1/4" Cartridge Length | | Blank = Buna E = EPR S = Silicone V = Viton |
| RH | B Brass head 304L stainless steel sump with brass petcock drain. | | 78 = 9 3/4" 80 = 20" 90 = 30" | 4 = 1/2" 6 = 3/4" 8 = 1" | | Blank = None BSP = BSP thread *Vent = Vent Screw *GP4 = 1/4" gauge port *GP8 = 1/8" gauge port DSG = Variable Seal (spring loaded) 10 = 10" Cartridge Length 195 = 19 1/2" Cartridge Length 294 = 29 1/4" Cartridge Length | | Blank = Buna E = EPR S = Silicone V = Viton |

*When ordering vents or gauge ports you must specify location:
I = Inlet; O = Outlet; I/O = Inlet and Outlet.
Example: GP4I or GP4/O



Ring Closure